

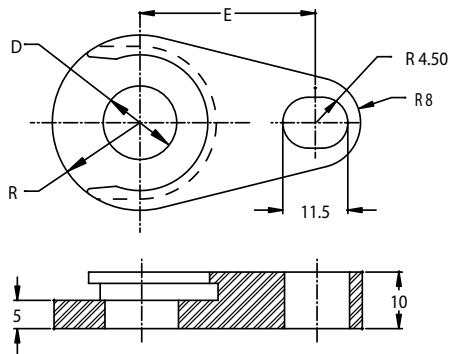
# TRUE SET STRIPPERS

- Innovative One-Piece construction
- Patented cost savings “Snap in” retention feature
- Interchangeable and complies with NAAMS standards
- Precision machined to assure perpendicularity resulting to prolonged Urethane life
- Adaptable to special multi-hole Retainers



## MTR STYLE STRIPPER RETAINER

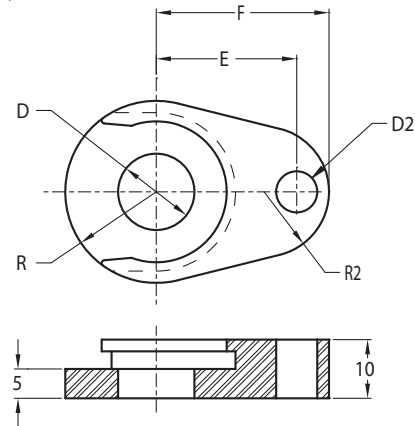
(To be used with Standard MRH True Set Retainer)



Catalog No.	D	R	E
MTR 10	10	13	28
MTR 13	13	15.5	31
MTR 16	16	18	32.9
MTR 20	20	20.5	34.8
MTR 25	25	24	39.8
MTR 32	32	31	41.3
MTR 40	40	36	45

## MTP STYLE STRIPPER RETAINER

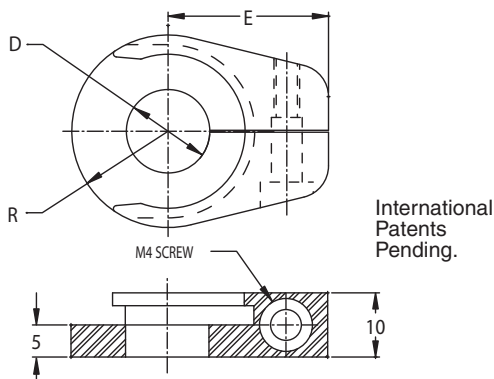
(To be used with the Round MRR True Set Retainer)



Catalog No.	D	R	E	F	D2	R2
MTP 10	10	13.0	21.0	26.5	7	10.0
MTP 13	13	15.5	23.9	29.4	7	11.0
MTP 16	16	18.0	24.5	30.0	7	12.8
MTP 20	20	20.5	29.0	36.0	9	11.8
MTP 25	25	24.0	33.5	40.5	9	12.9
MTP 32	32	31.0	40.6	49.3	9	8.0
MTP 40	40	36.0	44.0	53.0	9	8.0

## MTM STYLE STRIPPER RETAINER

(To be used with MRM and Multi Hole Retainer)



Catalog No.	D	R	E
MTM 10	10	13	22.5
MTM 13	13	15.5	25
MTM 16	16	18	27.5
MTM 20	20	20.5	30
MTM 25	25	24	35.5
MTM 32	32	31	37.5
MTM 40	40	36	42.3

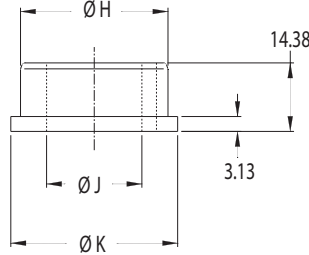
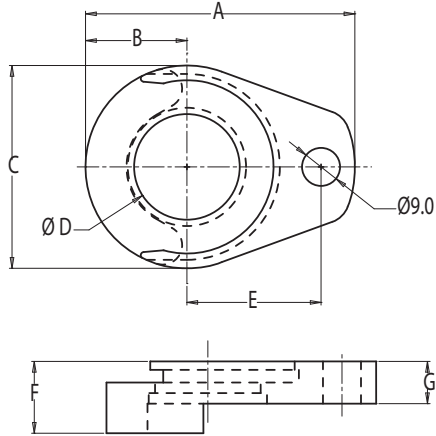
# TRUE SET STRIPPERS

- Innovative One-Piece construction
- Patented cost savings “Snap in” retention feature
- Interchangeable and complies with NAAMS standards
- Precision machined to assure perpendicularity resulting to prolonged Urethane life
- Adaptable to special multi-hole Retainers



## NOSE LARGE STRIPPER RETAINER

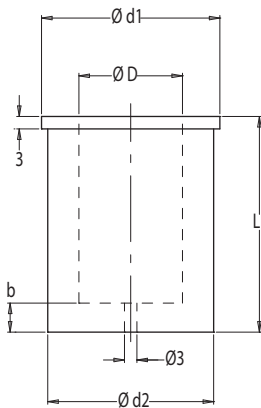
(To be used with the Standard MRH True Set Retainer)



International Patents Pending.

\*XX = “L” DIMENSION OF URETHANE

CATALOG TYPE	SHANK Ø	MAX P/G	A	B	C	D	E	F	G	H	J	K	*USE WITH URETHANE
MTB010016	10.0	15.75	53.18	18.0	36	16	26.93	17	10	15.75	10	19	MTS16-XX
MTB013020	13.0	19.75	58.60	20.5	41	20	29.97	17	10	19.75	13	23	MTS20-XX
MTB016025	16.0	24.75	63.75	24.0	48	25	31.75	17	10	24.75	16	28	MTS25-XX
MTB020032	20.0	31.75	73.86	31.0	62	32	33.53	17	10	31.70	20	34	MTS32-XX
MTB025040	25.0	39.75	83.63	36.0	72	40	40.64	17	10	39.70	25	44	MTS40-XX
MTB032040	32.0	39.75	83.63	36.0	72	40	40.64	18	10	39.70	32	44	MTS40-XX



## URETHANE HARDNESS 95 SHORE A

Heavy Duty Ball Lock Punch Length	Recommended Stripper Length “L”
80	43
90	52
100	63

CATALOG TYPE	SHANK Ø	L +1.0/-0.6 STRIPPER LENGTHS	D3	d1	d2	b	VENT HOLE
*MTS16-XX TO BE USE ON MTB010016	10.0	43	15.75	31	28	6	3
		52					
		63					
*MTS20-XX TO BE USE ON MTB013020	13.0	43	19.75	36	33	7	3
		52					
		63					
*MTS25-XX TO BE USE ON MTB016025	16.0	43	24.75	43	40	7	3
		52					
		63					
*MTS32-XX TO BE USE ON MTB020032	20.0	43	31.75	55	50	7	3
		52					
		63					
*MTS40-XX TO BE USE ON MTB025040	25.0	43	39.75	65	60	8	3
		52					
		63					
*MTS40-XX TO BE USE ON MTB032040	32.0	43	39.75	65	60	8	3
		52					
		63					