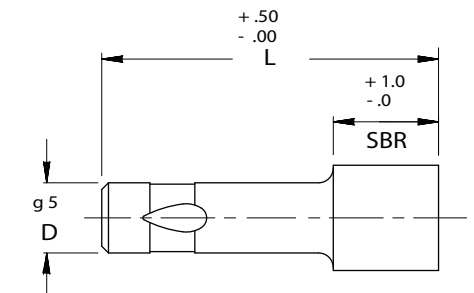
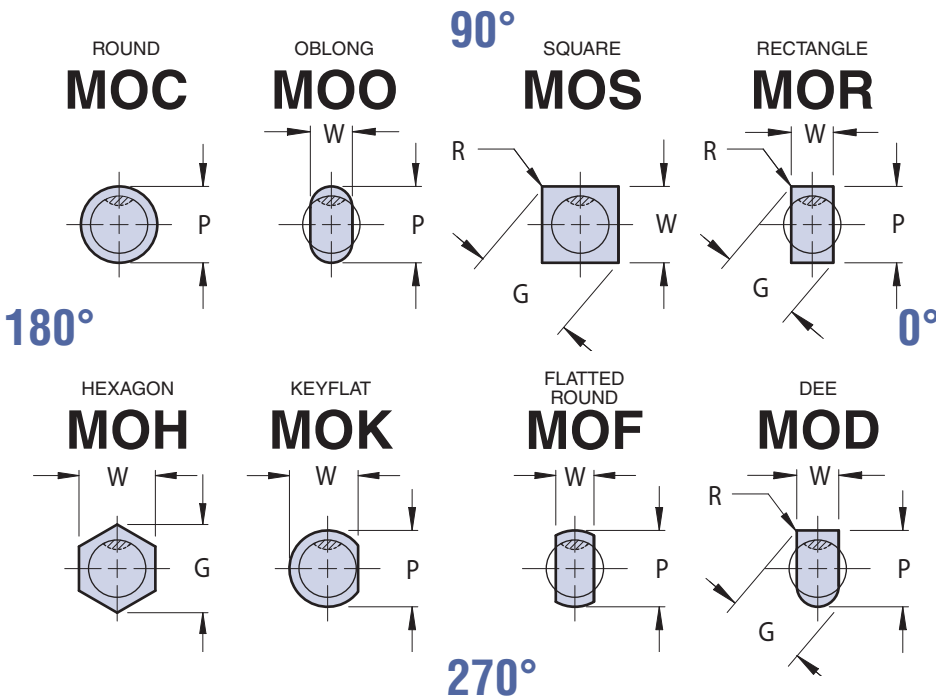


NOSE LARGE PUNCHES

LIGHT DUTY/SOLID



FOR STANDARD ALTERATIONS SEE PAGES 49-54.

VIEWS ARE SHOWN LOOKING THROUGH THE SHANK BUT DRAWN WITH SOLID LINES FOR CLARITY.

CATALOG TYPE	SHANK DIA D	POINT LENGTH "S.B.R."	ROUND	SHAPE		LENGTH "L"		
			RANGE P	MIN W	MAX G/P	80	90	100
MO_10	10	16	10.10 - 25.00	3.00	25.00	X	X	X
MO_13	13	20	13.10 - 32.00	5.00	32.00	X	X	X
MO_16	16	25	16.10 - 38.00	6.00	38.00	X	X	X
MO_20	20	25	20.10 - 40.00	8.00	40.00	X	X	X
MO_25	25	25	25.10 - 45.00	10.00	45.00	X	X	X

Material

Steel: M2, RC 60-63

Standard Point Tolerance

Round P $\begin{matrix} +.01 \\ -.00 \end{matrix}$

	.01	P to D
--	-----	--------

Shape P, W $\pm .01$

	.02	P to D
--	-----	--------

STANDARD BALL SEAT LOCATION IS AT 90° AS SHOWN. AVAILABLE AT 0°, 180°, 270°, FOR SAME PRICE.