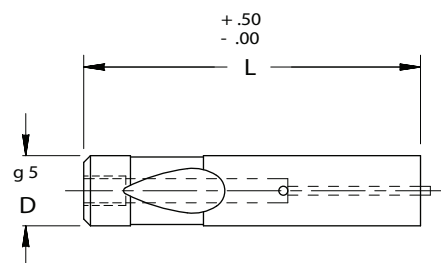
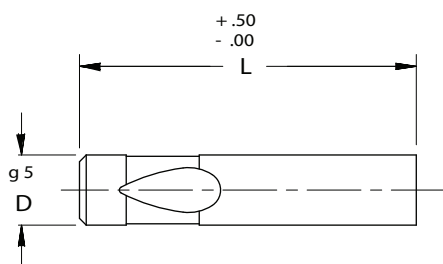


BALL LOCK PUNCH BLANKS



HEAVY DUTY/SOLID/EJECTOR



Material
Steel: M2, RC 60-63

FOR STANDARD ALTERATIONS SEE PAGES 49-54.

CATALOG NUMBER SOLID	SHANK DIA D	OVERALL LENGTH "L"											
		71	80	90	100	110	125	150	165	170	175	180	190
MHB 10	10	X	X	X	X	X	X	X					
MHB 13	13	X	X	X	X	X	X	X					
MHB 16	16	X	X	X	X	X	X	X	X				
MHB 20	20	X	X	X	X	X	X	X		X			
MHB 25	25		X	X	X	X	X	X			X		
MHB 32	32		X	X	X	X	X	X				X	
MHB 40	40		X	X	X	X	X	X					X

CATALOG NUMBER EJECTOR	SHANK DIA D	OVERALL LENGTH "L"						EJECTOR SIZE
		71	80	90	100	110	125	
MEB 10	10	X	X	X	X			MAE 4
MEB 13	13	X	X	X	X	X	X	MAE 5
MEB 16	16	X	X	X	X	X	X	MAE 5
MEB 20	20	X	X	X	X	X	X	MAE 6
MEB 25	25		X	X	X	X	X	MAE 6
MEB 32	32		X	X	X	X	X	MAE 6
MEB 40	40		X	X	X	X	X	MAE 6