



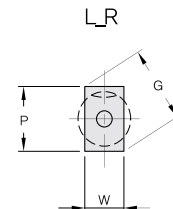
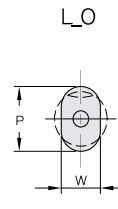
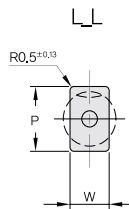
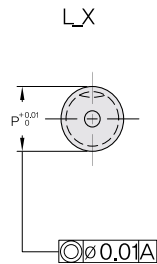
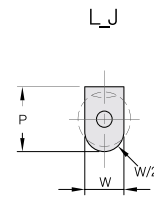
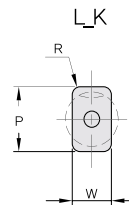
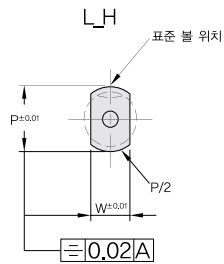
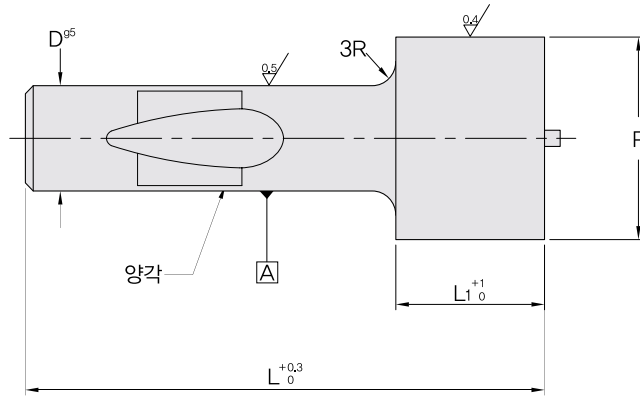
# PUNCH - LZ\_ • LK\_ BALL LOCK POINT LARGER THAN SHANK PUNCH

## TYPE EJECTOR LZ\_

(경하중용)

## TYPE 표준형 LK\_

(경하중용)



- \*  $P \geq W$
- \* R=지정가능
- \*  $G = \sqrt{P^2 + W^2}$



# PUNCH - LZ\_•LK\_ BALL LOCK POINT LARGER THAN SHANK PUNCH

## EJECTOR

L1 Std. S	Alt. A	Type&D	원형 P	Type&D	이형 min. - max. W P/G	L		
						80	90	100
19	30	LZX13	13.10-32.00	LZ_13	5.00-32.00	●	●	●
19	30	LZX16	16.10-38.00	LZ_16	6.50-35.00	●	●	●
19	30	LZX20	20.10-40.00	LZ_20	8.00-40.00	●	●	●
19	30	LZX25	25.10-44.00	LZ_25	10.00-44.00	●	●	●
19	30	LZX32	32.10-50.00	LZ_32	11.50-50.00	●	●	●

## REGULAR

L1 Std. S	Alt. A	Type&D	원형 P	Type&D	이형 min. - max. W P/G	L		
						80	90	100
19	30	LKX13	13.10-32.00	LK_13	5.00-32.00	●	●	●
19	30	LKX16	16.10-38.00	LK_16	6.50-35.00	●	●	●
19	30	LKX20	20.10-40.00	LK_20	8.00-40.00	●	●	●
19	30	LKX25	25.10-44.00	LK_25	10.00-44.00	●	●	●
19	30	LKX32	32.10-50.00	LK_32	11.50-50.00	●	●	●

규격표기 방법    Catalog No.    D    -    L1    -    L    -    P  
    LKX    16    -    30    -    80    -    30.5