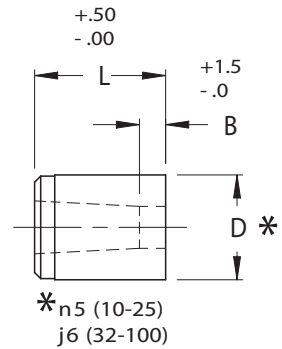
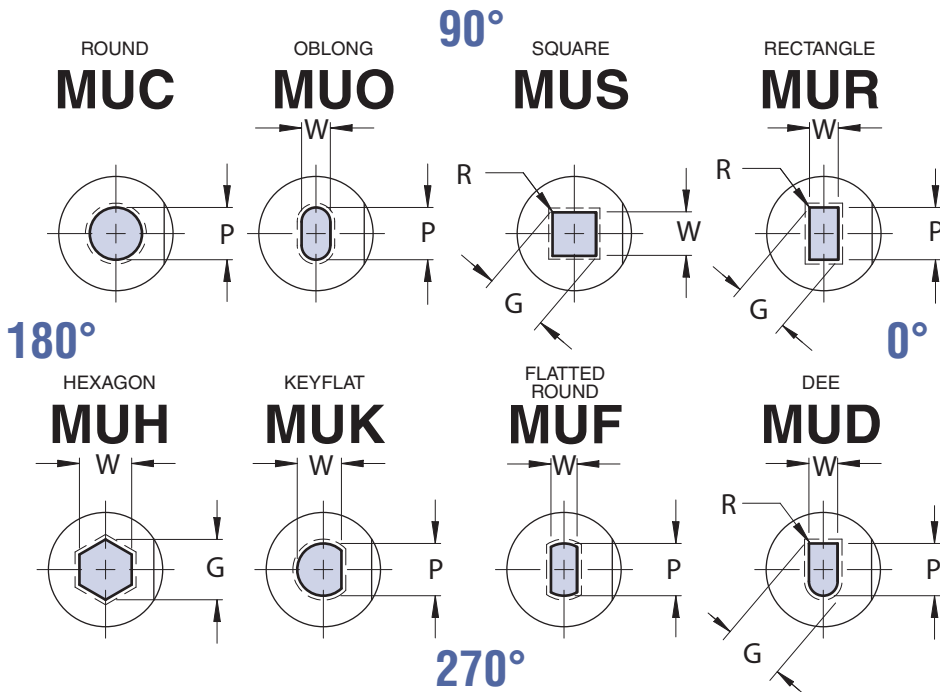


PRESS FIT BUTTONS



ULTRA LIFE/TAPER RELIEF



VIEWES ARE SHOWN LOOKING AT TOP FACE OF BUTTON.

FOR STANDARD ALTERATIONS SEE PAGES 49-54.
STANDARD TAPER: ROUND 1° PER SIDE/SHAPED 1-1/2° PER SIDE

CATALOG TYPE	BODY DIA D	LAND LENGTH "B"				ROUND RANGE P	SHAPE		OVERALL LENGTH "L"					
		NAPMA STD	ALTERNATES				MIN W	MAX G/P	22	25	28	30	32	35
			A	B	C									
MU_10	10	4.0	8.0		3.0	1.6 - 5.0	1.6	5.0	X	X	X	X	X	X
MU_13	13	5.0	8.0		3.0	3.0 - 7.2	1.8	7.2	X	X	X	X	X	X
MU_16	16	5.0	8.0		3.0	5.0 - 8.8	2.5	8.8	X	X	X	X	X	X
MU_20	20	5.0	12.0	20.0	3.0	5.5 - 11.0	3.2	11.0	X	X	X	X	X	X
MU_22	22	6.0	12.0	20.0	3.0	7.5 - 14.0	4.0	14.0	X	X	X	X	X	X
MU_25	25	6.0	12.0	20.0	3.0	9.5 - 16.5	4.8	16.5	X	X	X	X	X	X
MU_32	32	6.0	12.0	20.0	3.0	13.0 - 20.0	5.5	20.0	X	X	X	X	X	X
MU_38	38	8.0	12.0	20.0	3.0	16.0 - 26.0	6.4	26.0	X	X	X	X	X	X
MU_40	40	8.0	12.0	20.0	3.0	16.6 - 26.0	6.4	26.0	X	X	X	X	X	X
MU_45	45	8.0	12.0	20.0	3.0	22.0 - 31.0	7.5	31.0		X	X	X	X	X
MU_50	50	8.0	12.0	20.0	3.0	24.0 - 34.0	8.0	34.0		X	X	X	X	X
MU_56	56	8.0	12.0	20.0	3.0	26.0 - 38.0	8.5	38.0		X	X	X	X	X
MU_63	63	8.0	12.0	20.0	3.0	30.0 - 43.0	9.0	43.0		X	X	X	X	X
MU_71	71	8.0	12.0	20.0	3.0	34.0 - 48.0	9.5	48.0		X	X	X	X	X
MU_76	76	8.0	12.0	20.0	3.0	36.0 - 52.0	10.0	52.0						X
MU_85	85	8.0	12.0	20.0	3.0	40.0 - 58.0	11.0	58.0						X
MU_90	90	8.0	12.0	20.0	3.0	43.0 - 61.0	12.0	61.0						X
MU_100	100	8.0	12.0	20.0	3.0	48.0 - 68.0	13.0	68.0						X

Material
Steel: STD A2, RC 58-60
Alternate M2, 60-63

Standard Point Tolerance

Round P $\begin{matrix} +.01 \\ -.00 \end{matrix}$.01 P to D

Shape P,W $\begin{matrix} +.02 \\ -.00 \end{matrix}$.02 P to D

Alternate Hole Tolerance **T2**

P, W TOLERANCE $\begin{matrix} +.005 \\ -.000 \end{matrix}$

P to D .008 $\text{\textcircled{0}}$

ONLY AVAILABLE BELOW 45 BODY DIAMETER

STANDARD FLAT LOCATION IS AT 0° AS SHOWN.
AVAILABLE AT 90°, 180°, 270°, FOR SAME ALTERATION PRICE.