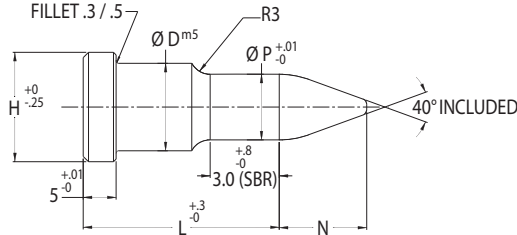


SHOULDER PILOTS



PILOT/COMPACT

POINTED STYLE



Material
Steel: M2, RC 60-63

Standard Point Tolerance
Round P $\begin{matrix} +.01 \\ -.00 \end{matrix}$ $\text{\textcircled{C}}$.01 P to D
When P = D Shank Tolerances Apply

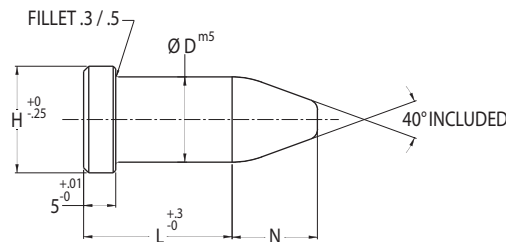
Alternate Point Tolerance **T2**

P TOLERANCE $\begin{matrix} +.005 \\ -.000 \end{matrix}$
P to D $\begin{matrix} .008 \\ \text{\textcircled{C}} \end{matrix}$

FOR STANDARD ALTERATIONS SEE PAGES 49-54.

CATALOG TYPE POINTED	SHANK DIA D RANGE	DIA P RANGE	N	H	OVERALL LENGTH "L"						
					16	20	22	25	28	32	35
MSW 04	4	1.95 - 3.99	4	7.0	X	X	X	X	X	X	X
MSW 05	5	2.65 - 4.99	5	8.0	X	X	X	X	X	X	X
MSW 06	6	3.30 - 5.99	6	9.0	X	X	X	X	X	X	X
MSW 08	8	4.10 - 7.99	7	11.0	X	X	X	X	X	X	X
MSW 10	10	4.80 - 9.99	8	13.0	X	X	X	X	X	X	X
MSW 13	13	6.25 - 12.99	10	16.0	X	X	X	X	X	X	x
MSW 16	16	9.85 - 15.99	15	19.0	X	X	X	X	X	X	X
MSW 20	20	13.50 - 19.99	20	23.0		X	X	X	X	X	X
MSW 25	25	17.20 - 24.99	25	28.0		X	X	X	X	X	X
MSW 32	32	20.80 - 31.99	30	35.0		X	X	X	X	X	X

STRAIGHT STYLE



Material
Steel: M2, RC 60-63

Standard Point Tolerance
Round P $\begin{matrix} +.01 \\ -.00 \end{matrix}$ $\text{\textcircled{C}}$.01 P to D

Alternate Point Tolerance **T2**

P TOLERANCE $\begin{matrix} +.005 \\ -.000 \end{matrix}$

CATALOG TYPE STRAIGHT	SHANK DIA D RANGE	N	H	OVERALL LENGTH "L"						
				16	20	22	25	28	32	35
MSV 04	3.01 - 4.00	4	7.0	X	X	X	X	X	X	X
MSV 05	4.01 - 5.00	5	8.0	X	X	X	X	X	X	X
MSV 06	5.01 - 6.00	6	9.0	X	X	X	X	X	X	X
MSV 08	6.01 - 8.00	7	11.0	X	X	X	X	X	X	X
MSV 10	8.01 - 10.00	8	13.0	X	X	X	X	X	X	X
MSV 13	10.01 - 13.00	10	16.0	X	X	X	X	X	X	X
MSV 16	13.01 - 16.00	15	19.0	X	X	X	X	X	X	X
MSV 20	16.01 - 20.00	20	23.0		X	X	X	X	X	X

FOR STANDARD ALTERATIONS SEE PAGES 49-54.